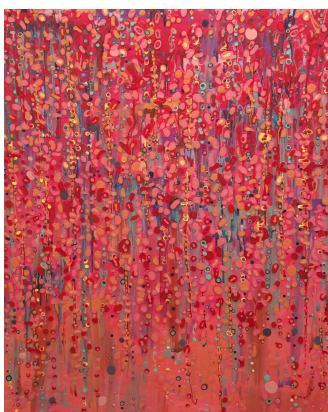




# Charlotte Smith: NOW AND THEN

September 18th – October 10th, 2015



So Hot - 2015



Deluge - 2007



Renew - 1994

**Opening Reception:** Friday, Sept. 18th, 6:00 – 8:00

**Book Signing:** Saturday, Sept. 19th, 1:30 – 2:30

**NEW Gallery Location** in the Flatbed Building:

2832 E. MLK Jr. Blvd., Austin, TX 78702

**Charlotte Smith** has developed a reputation for creating artworks that are literally piled high with paint. With an artistic practice that is as vibrant as ever: Smith continues to explore the materiality of acrylic paint, pushing the boundaries of this medium. In this exhibit, "Charlotte Smith: Now and Then", her most current body of work is presented alongside rare examples of earlier art works. Viewers are encouraged to visually explore these artworks, looking for details that may illuminate the common thread tying her works together through the years, while discovering other details that may betray the ways in which her practice has changed.

Join us for this **inaugural exhibit of our new gallery space** in the Flatbed Building running September 18<sup>th</sup> – October 10<sup>th</sup>. The artist will be in attendance for the opening Reception on Friday September 18<sup>th</sup> from 6:00pm to 8:00pm.

Charlotte Smith's artworks have been highlighted in many books and publications including "Texas Artists Today", "Texas Abstract: Modern/Contemporary" and most recently "Global Corporate Collections". On Saturday, Sept 19<sup>th</sup> at 1:30 pm, Charlotte Smith will be signing copies of these publications. A limited number of the book "Texas Abstract" will be for sale at the event.

Smith creates works of obsession using mostly acrylic paint as her medium. She defines her painting process as meditative; it is a very active form of meditation given that it includes dripping, blowing, layering, and piling. Focusing on composition, Charlotte relentlessly explores shapes, materiality, color, and the painting process with her works. Pushing and challenging the inherent properties of the materials, often her creations blur the boundary between painting and sculpture. She graduated in 1999 with a Masters of Fine Arts from University of North Texas. Now represented by CAMIBAart in Austin, she also has representation with Cris Worely Fine Arts in Dallas, Anya Tish Gallery in Houston, and George Billis Gallery in Los Angeles.

# Charlotte Smith: NOW AND THEN

## Art Price List

### Gallery

Counterclockwise starting on the right

- 01: *Paint Knot*; 2015; Dimensions Variable;  
Acrylic and Medium; \$2,800.00
- 02: *So Hot*; 2015; 60" x 48";  
Acrylic on canvas; \$8,200.00
- 03: *Stripes*; 2008; 40" x 111" total (14 panels);  
Acrylic on panel; \$16,800.00
- 04: *Into Deep Water*; 2015; 60" x 44";  
Acrylic on canvas; \$8,200.00
- 05: *Calm Space*; 2004; 36" x 36";  
Acrylic on panel; \$4,800.00
- 06: *Piled Grid*; 2011; 36" x 36";  
Acrylic on canvas; \$5,000.00
- 07: *Renew*; 1994; 60" x 48";  
Acrylic on canvas; \$7,800.00
- 08: *Just Dots*; 2002; 40" x 40";  
Acrylic on panel; \$6,500.00
- 09: *Deep Dream*; 2014; 12" x 12";  
Acrylic on panel; \$1,800.00
- 10: *Just Dots 1*; 2004; 6" x 6";  
Acrylic on panel; \$550.00
- 11: *Just Dots 2*; 2004; 6" x 6";  
Acrylic on panel; \$550.00
- 12: *Thin Line*; 2014; 12" x 12";  
Acrylic on panel; \$1,800.00

### Lounge

Counterclockwise starting on the right

- 13: *Deluge*; 2007; 30" x 30";  
Acrylic on panel; \$3,800.00
- 14: *Into Your Garden*; 2015; 48" x 48";  
Acrylic on canvas; \$7,200.00
- 15: *Into the Night*; 2015; diptych 48" x 72" each;  
Acrylic on canvas; \$17,000.00
- 16: *Over and Out 4*; 2006; 36.5" x 20";  
Acrylic on panel; \$3,600.00
- 17: *Lush*; 2011; 20" x 20";  
Acrylic on panel; \$3,200.00
- 18: *Blue Over Pink Blast*; 2004; 20" x 20";  
Acrylic on panel; \$3,200.00
- 19: *Pinocchio 3*; 2006; 30.5" x 11.5" x 5.5";  
Acrylic on wood construction; \$3,200.00